

The emergency keys are provided for:

- initial entry to the safe.
- a means of access if the batteries go flat.
- a means of access if you forget your user code. They should not be used for everyday access. Responsibility will not be taken if the user misplaces the emergency keys. Store these keys in a safe place but NOT inside the safe!

OTHER NOTES

- If you wish to clean your safe, use a damp cloth. Do not use liquid or sprayers.
- Never try to dismantle the product by yourself.
- Safe must be installed in an upright position or the warranty shall be void. A safe is an aid only in reducing theft, it must form only a part of a range of security measures used. Sandleford Holdings will not accept or be held responsible for any loss or damage caused in the event of theft or unauthorised use.

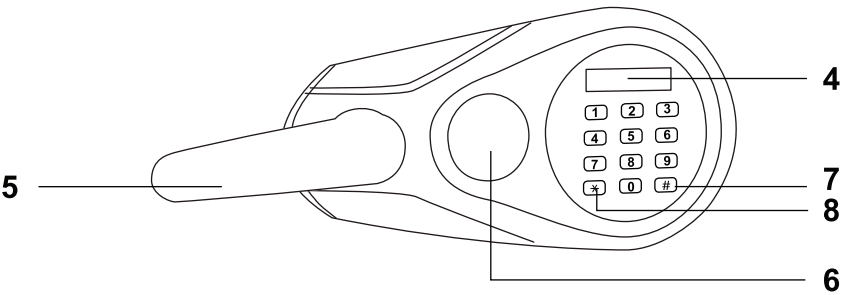
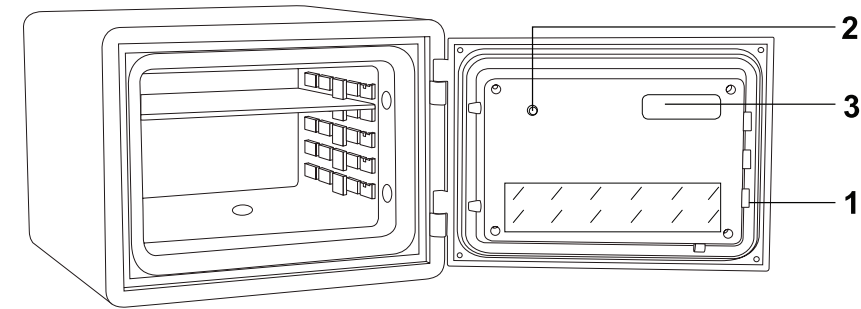
!! Do not store access keys inside your safe !!

Enquiries Ph (03)9786 0055

KARBON

DIGITAL & KEY LOCK

PREMIUM FIRE & WATER SAFE  
FW24E/1818E INSTRUCTION



- |                        |                             |
|------------------------|-----------------------------|
| 1. Bolts               | 5.Handle                    |
| 2. Reset Button        | 6.Emergency Key Lock Cover  |
| 3. Battery Compartment | 7.Start & Confirming Button |
| 4. LCD Display         | 8.Delete Key                |

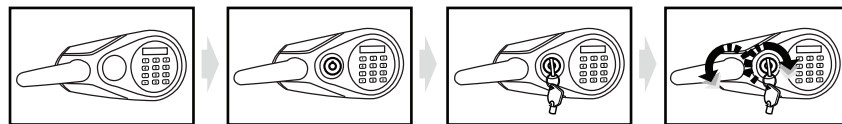
Do not store emergency keys  
or instructions inside your safe!

Enquiries Ph (03)9786 0055

## PROGRAMMING YOUR SAFE

### Batteries

1. Remove the emergency cover and insert the emergency key.
2. Turn emergency key clockwise and hold.
3. Turn door handle downward while holding the key at its furthest clockwise point and pull the door open.
4. Insert 4 x AA batteries into the battery compartment. When batteries are inserted, the system is actuated to scan the circuit, then display will flash "GOOD". After that, it will be in standby mode.



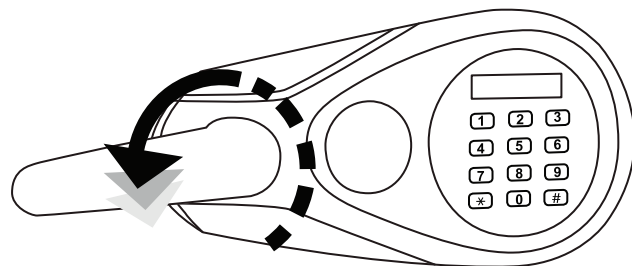
**⚠ CAUTION:** Under normal condition, if the display shows "LO-BATTE", it means the voltage is low and you should insert new batteries, it is best to use heavy duty alkaline AA batteries by inserting as indicated by the + & - symbols.

### Program User Code

This safe comes programmed with a preset factory code - 1 5 9 #.

1. Press key "#", the screen will flash blue backlight.
2. Enter preset user code "159" within 6 seconds and press the "#" key.
3. Push the handle downward, the safe is open now.

**⚠ CAUTION:** You may press the key "\*" to clear any incorrect digit you have input. One digit will be cleared each time when you press the key.



**!! Do not store access keys inside your safe !!**

Enquiries Ph (03)9786 0055

For security purposes you will need to change this to your own personal code by following these steps:

1. With the door open, press the reset button (located on the back of the door), the screen will flash blue backlight and shows ".....".
2. Now input 3-8 digit code and press "#" to confirm. The display will read "IN", which means the setting is accepted. Then you can use your safe box by new password.
3. If you wish to change your code again, re-follow the steps above.

### Using your safe

You will now be able to unlock and open your safe using your own user code.

#### A. Opening Safe with User Code

1. Press key "#", the screen will flash blue backlight.
2. Enter your 3-8 digit user code within 6 seconds followed by "#" button.
3. Push the handle downward, the safe is open now.

If the wrong code is entered 3 times consecutively, the alarm will sound for 20 seconds, and the keypad will activate lockout mode for 3 minutes (the keypad will be disabled during lockout).

#### B. How to Close Safe

Close the door and push handle upward to lock the safe.

#### Hiding Code whilst Opening Safe

If you wish to hide the code whilst inputting into the keypad follow these steps:

- Press key "#" - the screen will flash blue.
- Press key "\*" before entering your code and the screen will not show the code entered.

#### Alarm Device

If press key "\*", the display reads "BELL ON", which means the alarm device is activated. The alarm will sound for 20 seconds when been shaking, striking and moving. The sound will stop once the correct password is entered.

**!! Do not store access keys inside your safe !!**

Enquiries Ph (03)9786 0055